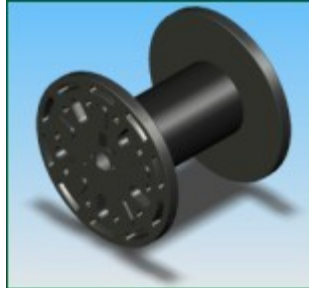


**Various REELS**

**Small REELS (HDPE Plastic):** Reel Core's patented blow-molded reel design minimizes shipping costs and assembly time. Simply turning the flange onto the threaded core is all it takes to assemble the reel. We use high density polyethylene (HDPE) plastic in our manufacturing process. A blow molded reel is very impact resistant. Our reel can withstand a four foot drop loaded with up to 150 lbs. of product.



<b>Small Reel: (HDPE-Plastic)</b>				
#	<b>Flanch diam. Core OD x Length</b>	<b>MARBOOM ~ lengt feet</b>	<b>Flanch diam. Core OD x length</b>	<b>MARBOOM ~ lengt meter.</b>
<b>1</b>	24x 11x 24"	250 ft.	61x 28x 61 cm	75 mtr.
<b>2</b>	28x 11x 24"	360 ft.	71x 28x 61 cm	110 mtr.
<b>3</b>	32x 11x 26"	540 ft.	81x 28x 66 cm	160 mtr.
<b>4</b>	36x 14x 26"	680 ft.	91x 31x 66 cm	200 mtr.

**Large REELS (manual or hydraulic):** We offer small and large Boom Reels capable of holding a variety of sizes, style and quantity of containment boom. The reel is constructed of marine grade aluminum alloy. The base is constructed of mild steel and coated. The booms can be equipped with a hydraulic power pack mounted to the steel base.



<b>Large Reel: (manual or hydraulic)</b>				
#	<b>Flanch diam. x Length ft.</b>	<b>MARBOOM ~ lengt feet &amp; weight Lb.</b>	<b>Flanch diam. x length cm.</b>	<b>MARBOOM ~ lengt meter &amp; weight kg.</b>
<b>1</b>	4x 4 ft.	2400 ft. / 1800 Lb..	122x 122 cm	750 meter / 810 kg
<b>2</b>	6x 6 ft.	8500 ft. / 6200 Lb.	183x 183 cm	2600 meter / 2800 kg
<b>3</b>	8x 16 ft.	38,000 ft. / 27,000 Lb.	244x 488 cm	11,700 meter / 12,600 kg
<b>4</b>	10x 20 ft.	80,000 ft. / 57,000 Lb..	305x 610 cm	24,400 meter / 26,100 kg